

TPD52L3 Antibody (N-term)
Affinity Purified Rabbit Polyclonal Antibody (Pab)
Catalog # AP20505a

Specification

TPD52L3 Antibody (N-term) - Product Information

Application	IF, WB,E
Primary Accession	Q96J77
Reactivity	Human
Host	Rabbit
Clonality	Polyclonal
Isotype	Rabbit IgG
Calculated MW	15503
Antigen Region	10-38

TPD52L3 Antibody (N-term) - Additional Information

Gene ID 89882

Other Names

Tumor protein D55, hD55, Testis development protein NYD-SP25, Tumor protein D52-like 3, TPD52L3

Target/Specificity

This TPD52L3 antibody is generated from rabbits immunized with a KLH conjugated synthetic peptide between 10-38 amino acids from the N-terminal region of human TPD52L3.

Dilution

IF~~1:25

WB~~1:1000

E~~Use at an assay dependent concentration.

Format

Purified polyclonal antibody supplied in PBS with 0.09% (W/V) sodium azide. This antibody is purified through a protein A column, followed by peptide affinity purification.

Storage

Maintain refrigerated at 2-8°C for up to 2 weeks. For long term storage store at -20°C in small aliquots to prevent freeze-thaw cycles.

Precautions

TPD52L3 Antibody (N-term) is for research use only and not for use in diagnostic or therapeutic procedures.

TPD52L3 Antibody (N-term) - Protein Information

Name TPD52L3

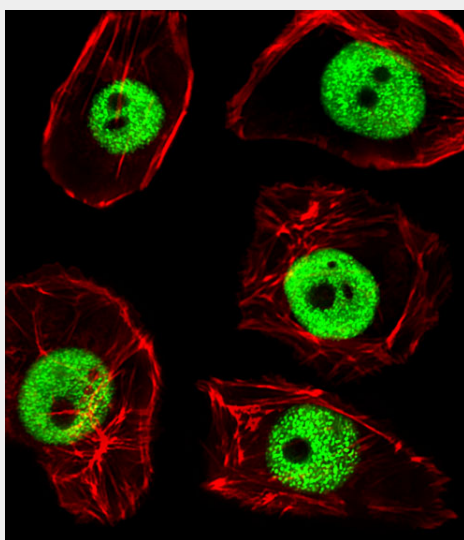
Tissue Location

Specifically expressed in testis. Expressed at 5.6- fold higher levels in adult testis than in fetal testis

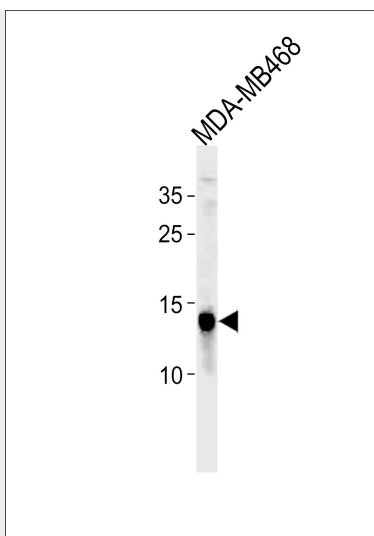
TPD52L3 Antibody (N-term) - Protocols

Provided below are standard protocols that you may find useful for product applications.

- [Western Blot](#)
- [Blocking Peptides](#)
- [Dot Blot](#)
- [Immunohistochemistry](#)
- [Immunofluorescence](#)
- [Immunoprecipitation](#)
- [Flow Cytometry](#)
- [Cell Culture](#)

TPD52L3 Antibody (N-term) - Images

Fluorescent image of MDA-MB468 cells stained with TPD52L3 Antibody (N-term)(Cat#AP20505A). AP20505A was diluted at 1:25 dilution. An Alexa Fluor 488-conjugated goat anti-rabbit IgG at 1:400 dilution was used as the secondary antibody (green). Cytoplasmic actin was counterstained with Alexa Fluor® 555 conjugated with Phalloidin (red).



TPD52L3 Antibody (N-term) (Cat. #AP20505a) western blot analysis in MDA-MB468 cell line lysates (35ug/lane). This demonstrates the TPD52L3 antibody detected the TPD52L3 protein (arrow).

TPD52L3 Antibody (N-term) - References

Cao Q., et al. Biochem. Biophys. Res. Commun. 344:798-806(2006).
Ota T., et al. Nat. Genet. 36:40-45(2004).
Humphray S.J., et al. Nature 429:369-374(2004).